

CD-7GV-50, CD-7G-50-PRO SPECIFICATIONS:

OUTPUT (±10%).....7 g/hr
 FLOW RATE (max).....7 scfh (3.3 lpm)
 CONCENTRATION.....2.5% - 3.0% WEIGHT

POWER REQUIREMENTS:
 DOMESTIC MODEL.....230 VAC, 50 Hz, 1Ø, 3.5 Amps

HEAT REJECTION.....2084 BTU/hr (610 WATTS)

WEIGHT..... 52 lb (24 kg)

LOCATION REQUIREMENTS*

MOUNTING.....WALL MOUNT IN A CLEAN, PROTECTED AREA USING SUPPLIED BRACKETS.

AMBIENT TEMP.....40°F - 100°F (5°C - 38°C)

VENTILATION.....CLOSED ROOM REQUIRES 6 AIR CHANGES PER HOUR. (MIN)

* PROTECTION FROM WEATHER ELEMENTS MUST BE PROVIDED FOR OUTDOOR INSTALLATIONS. OPERATING OUTSIDE OF THE RECOMMENDED TEMP. RANGES MAY RESULT IN DAMAGE NOT COVERED UNDER THE MANUFACTURER'S WARRANTY.

FEATURES:

LOW VACUUM PROTECTION

OZONE CELL THERMAL PROTECTION

ALL CIRCUITS FUSE PROTECTED

OUTPUT CONTROL:

GV MODEL.....0-100% KNOB ON FRONT PANEL

-PRO MODEL.....0-100%, 4-20mA FROM EXTERNAL CONTROLLER

OXYGEN PREPARATION:

• OXYGEN OUTPUT.....7 scfh @ 8 psig (max)

• DEW POINT.....-73°C

• OXYGEN PURITY.....90% ± 5%

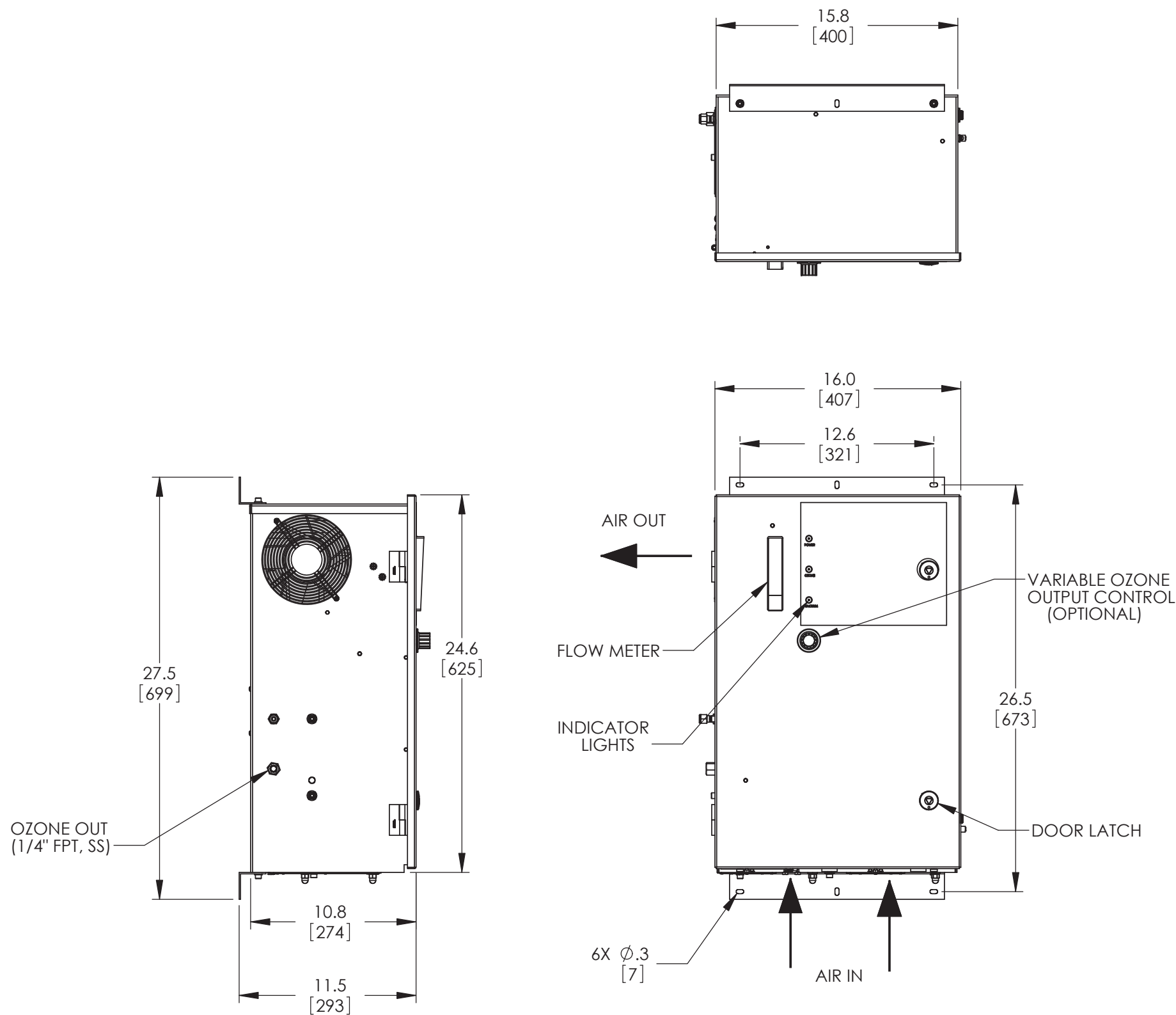
• SOUND LEVELS.....45 dba @ 1 METER, OPEN FIELD

• RESPONSE TIME.....2 MIN. FROM INITIAL STARTUP OR EXTENDED SHUTDOWN TO ATTAIN MAXIMUM PURITY

• COMPRESSOR.....1/3 HP OILLESS ROCKING PISTON

SELF REGULATED HIGH VOLTAGE, HIGH FREQUENCY OZONE POWER SUPPLY.

POWDER COATED STEEL ENCLOSURE.



DIMENSIONS IN IN[MM]					APPROVALS:	DATE:	PROPERTY OF DEL OZONE THIS DOCUMENT AND THE DATA DISCLOSED HEREIN IS PROPRIETARY. IT IS NOT TO BE REPRODUCED, USED, OR OTHERWISE DISCLOSED IN WHOLE, OR IN PART, TO ANYONE, WITHOUT WRITTEN CONSENT FROM DEL OZONE.	DEL OZONE™		TITLE: SPECIFICATION_DRAWING,CD-7GV-50			
TOLERANCES: .x ± .1 .xx ± .02 .xxx ± .010					DRAWN: AJACKSON			ENGR. APPR: Digitally signed by T.MCNEIL DN: cn=T.MCNEIL, o, ou, email=tmcneil@delozone.com, c=US Date: 2015.12.03 16:25:08 -08'00'	INTERPRET DRAWING PER ANSI Y14.5-1994	SCALE: 1:8 DO NOT SCALE DRAWING	SIZE: B	DWG. NO: 4-1314-01	REV. C
MATERIAL: SEE BOM					CHECKED:		REV. SHEET:						
FINISH: SEE BOM					Q.A. APPR:								

ZONE	REV.	DESCRIPTION	ECN	DATE
	C	ADD -PRO INFO	5181	12/3/2015
ALL	B	REVISE DRAWING AND SPECS FOR INTERNAL COMPRESSOR	4225	4/14/2009
ALL	A	INITIAL RELEASE	3898	3/24/2008
REVISIONS				

D

C

B

A

B FORMAT REV A