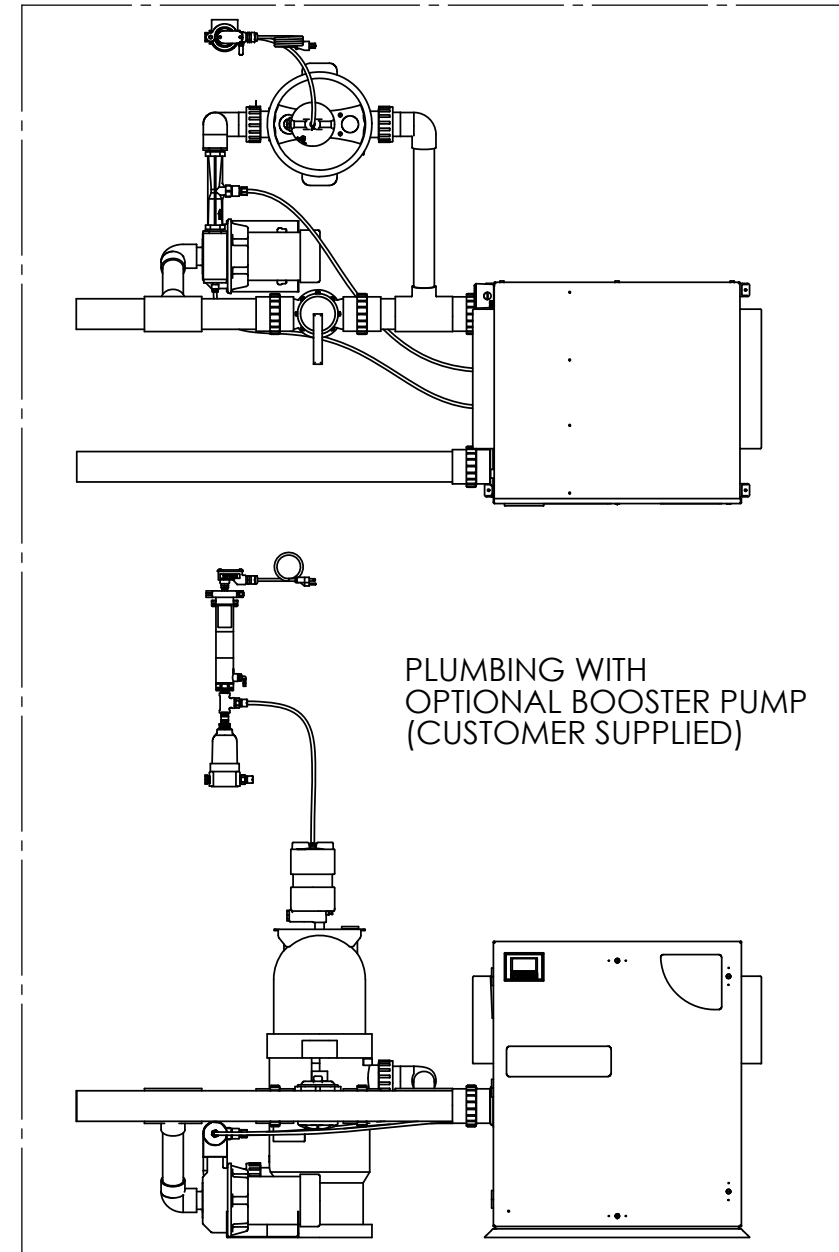
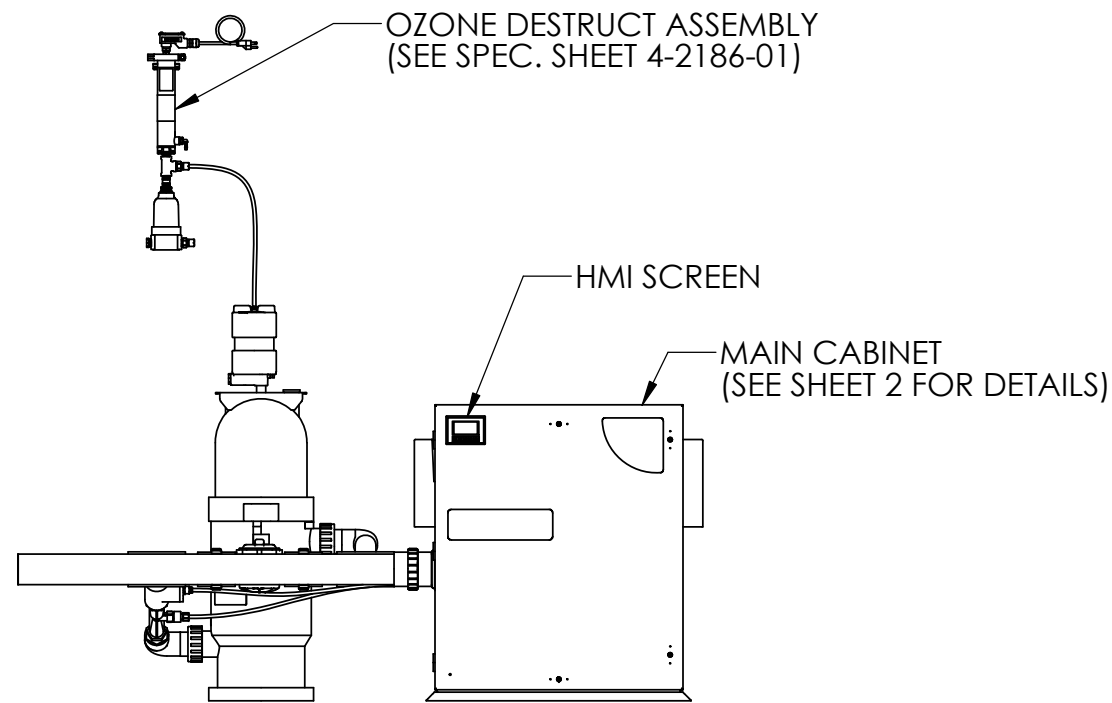
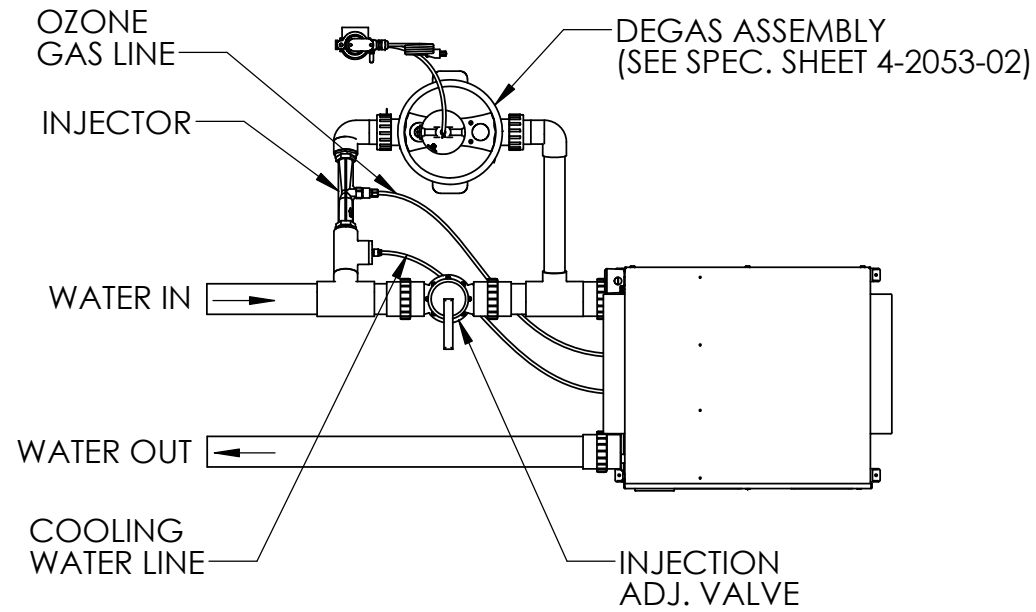


REVISIONS			
REV.	DESCRIPTION	ECN #	DATE
A	INITIAL RELEASE	NPI0105	06/09/2021

SPECIFICATIONS	
MODEL	AOP-PRO-200DXX-XX
POWER	240 V / 5.5 A / 60 Hz
ENLCOSURE RATING	NEMA 12
AMBIENT OPERATING TEMP.	40 - 100 °F (5 - 38 °C)
OPERATING FLOW RANGE	65 - 200 GPM
MAXIMUM OPERATING PRESSURE	50 PSI
MAXIMUM WATER TEMP.	102 °F (39 C)
APPROVALS	UL, NSF



NOTES: UNLESS OTHERWISE SPECIFIED

1. AOP-PRO-200D-01 MODEL SHOWN.
2. PVC PIPE NOT INCLUDED.

**PROPRIETARY AND CONFIDENTIAL**  
 THE INFORMATION CONTAINED IN THIS DRAWING IS THE SOLE PROPERTY OF CUSTOM MOLDED PRODUCTS. ANY REPRODUCTION IN PART OR AS A WHOLE WITHOUT THE WRITTEN PERMISSION OF CUSTOM MOLDED PRODUCTS IS PROHIBITED.

UNLESS OTHERWISE SPECIFIED  
 DIMENSIONS ARE IN INCHES [mm]  
 TOLERANCES:  
 .X ± .1  
 .XX ± .02  
 .XXX ± .010  
 ANGLES: ± 1°

DRAWING STATE:	
PROJECT #/ECN #:	
ENGINEERING DESIGN	DATE
T.MCNEIL	6/9/2021
ENGINEERING APPROVAL	



TITLE: SPECIFICATION, DWG,  
 AOP-PRO-200DXX-XX

PART NO.  
**4-2658-06**

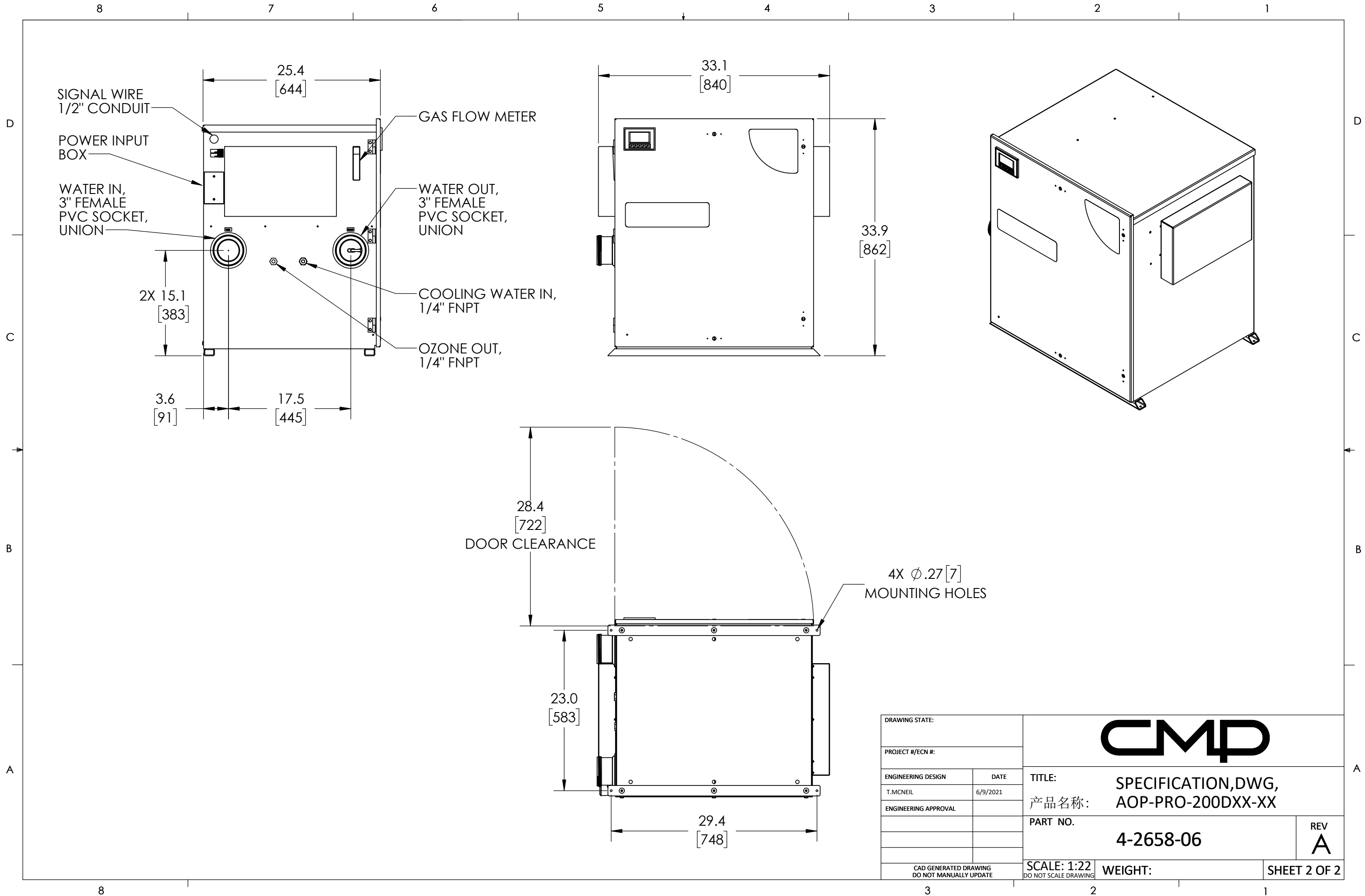
REV  
**A**

CAD GENERATED DRAWING  
 DO NOT MANUALLY UPDATE

SCALE: 1:22  
 DO NOT SCALE DRAWING

WEIGHT:

SHEET 1 OF 2



DRAWING STATE:		<b>CMP</b>	
PROJECT #/ECN #:			
ENGINEERING DESIGN	DATE	TITLE: SPECIFICATION, DWG, AOP-PRO-200DXX-XX	
T.MCNEIL	6/9/2021	产品名称: AOP-PRO-200DXX-XX	
ENGINEERING APPROVAL		PART NO. 4-2658-06	
		REV A	
CAD GENERATED DRAWING DO NOT MANUALLY UPDATE		SCALE: 1:22 DO NOT SCALE DRAWING	WEIGHT:
		SHEET 2 OF 2	