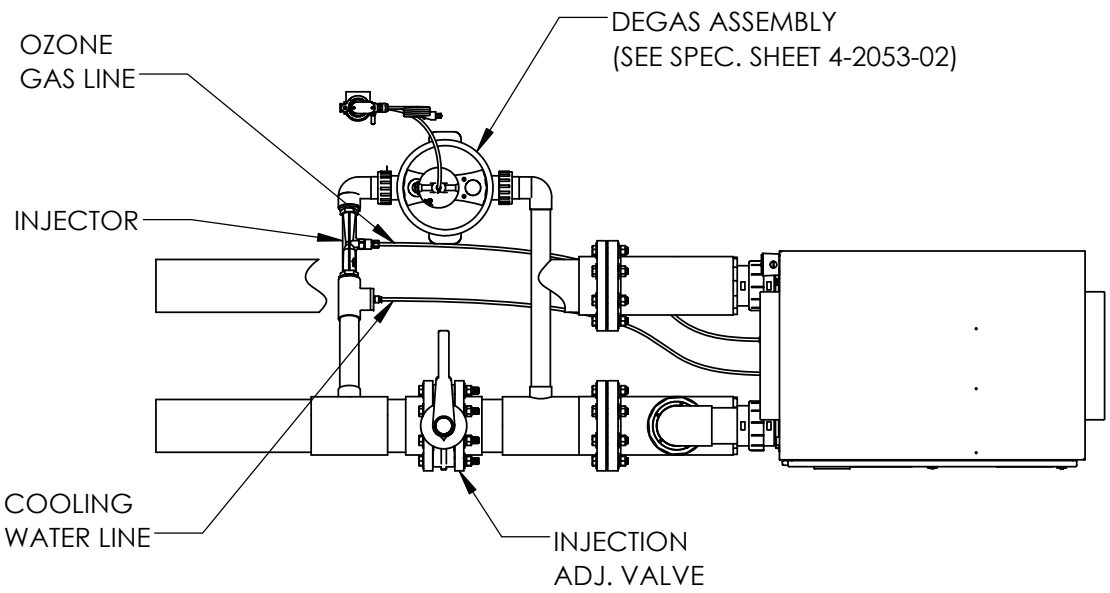


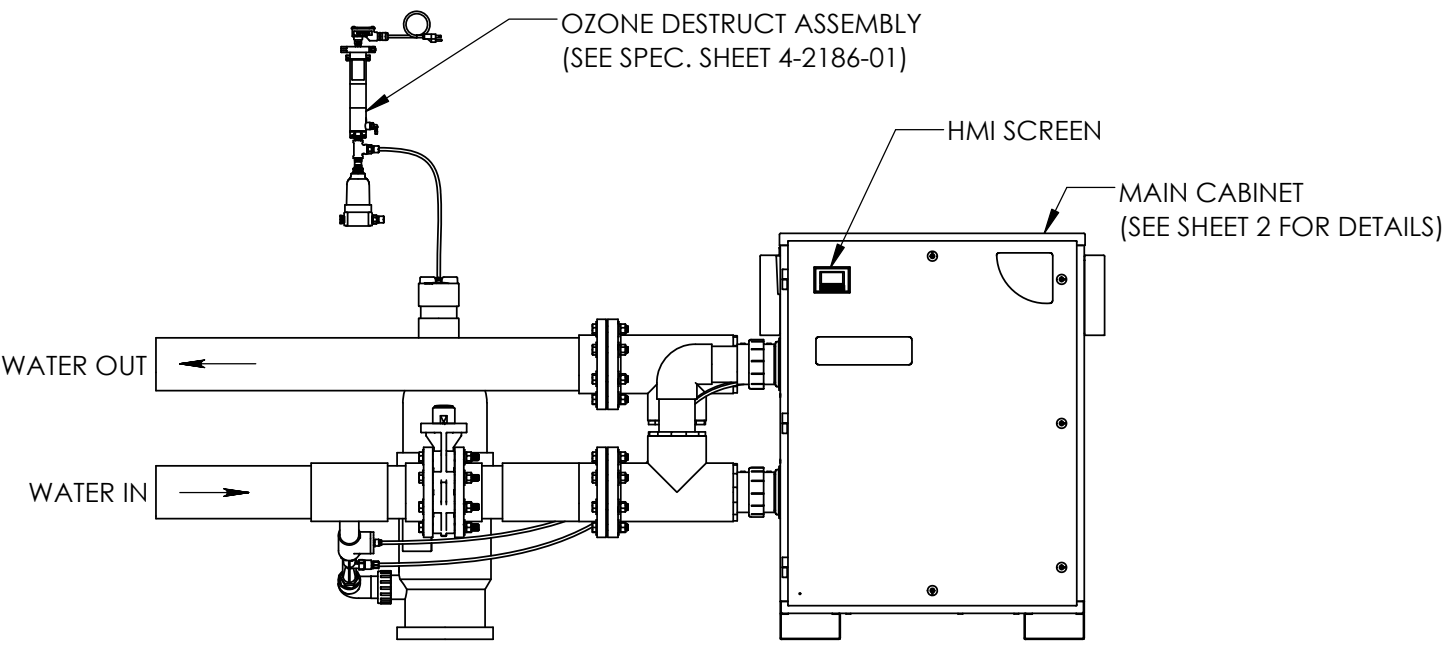
REVISIONS			
REV.	DESCRIPTION	ECN #	DATE
A	INITIAL RELEASE	NPI0105	4/22/2021

SPECIFICATIONS	
MODEL	AOP-PRO-500DXX-XX
POWER	240 V / 8.8 A / 60 Hz
ENCLOSURE RATING	NEMA 12
AMBIENT OPERATING TEMP.	40 - 100 °F (5 - 38 °C)
OPERATING FLOW RANGE	125 - 500 GPM
MAXIMUM OPERATING PRESSURE	50 PSI
MAXIMUM WATER TEMP.	102 °F (39 °C)
APPROVALS	UL, NSF

D

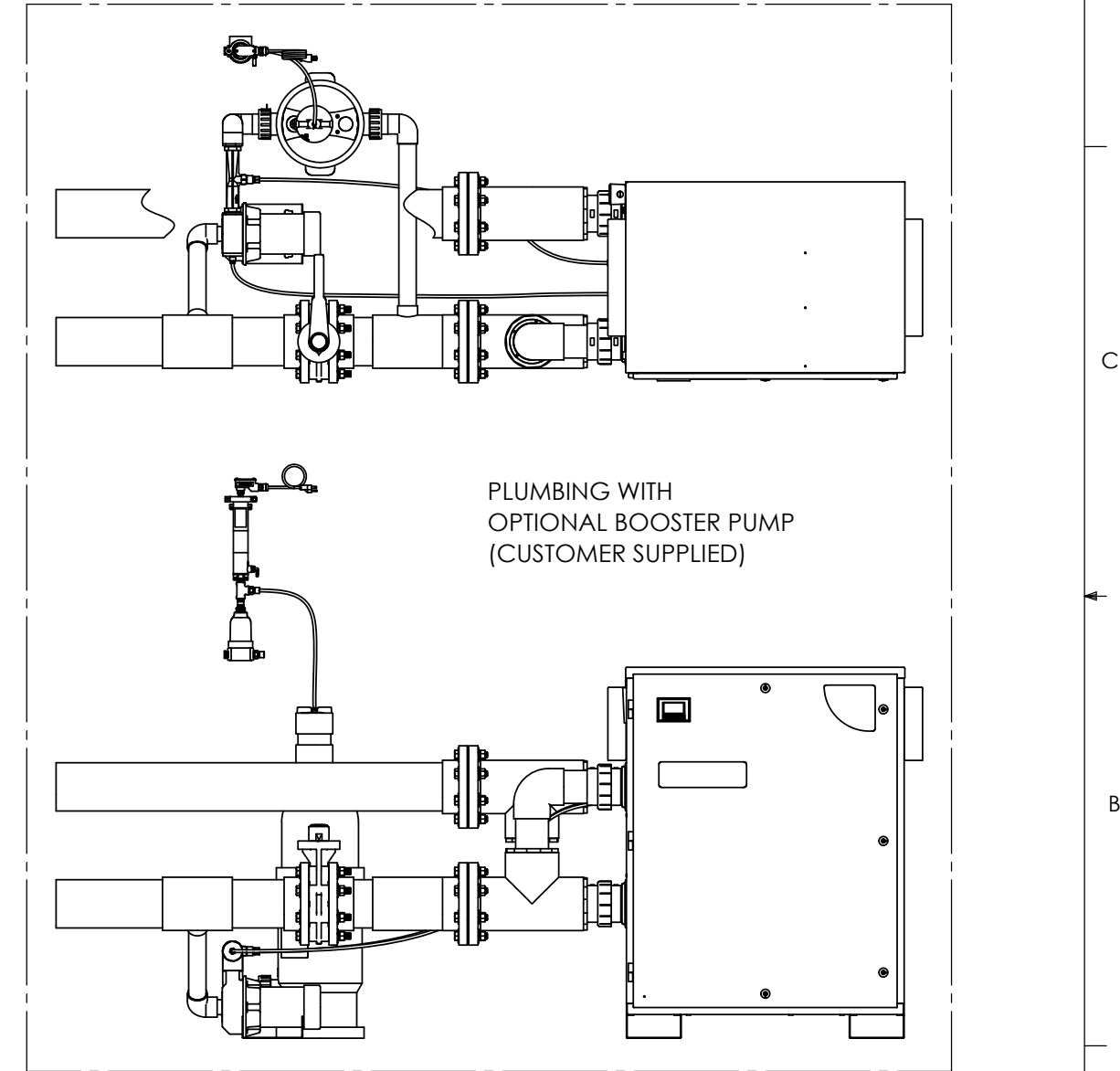


C



B

A



D

C

B


A

NOTES: UNLESS OTHERWISE SPECIFIED

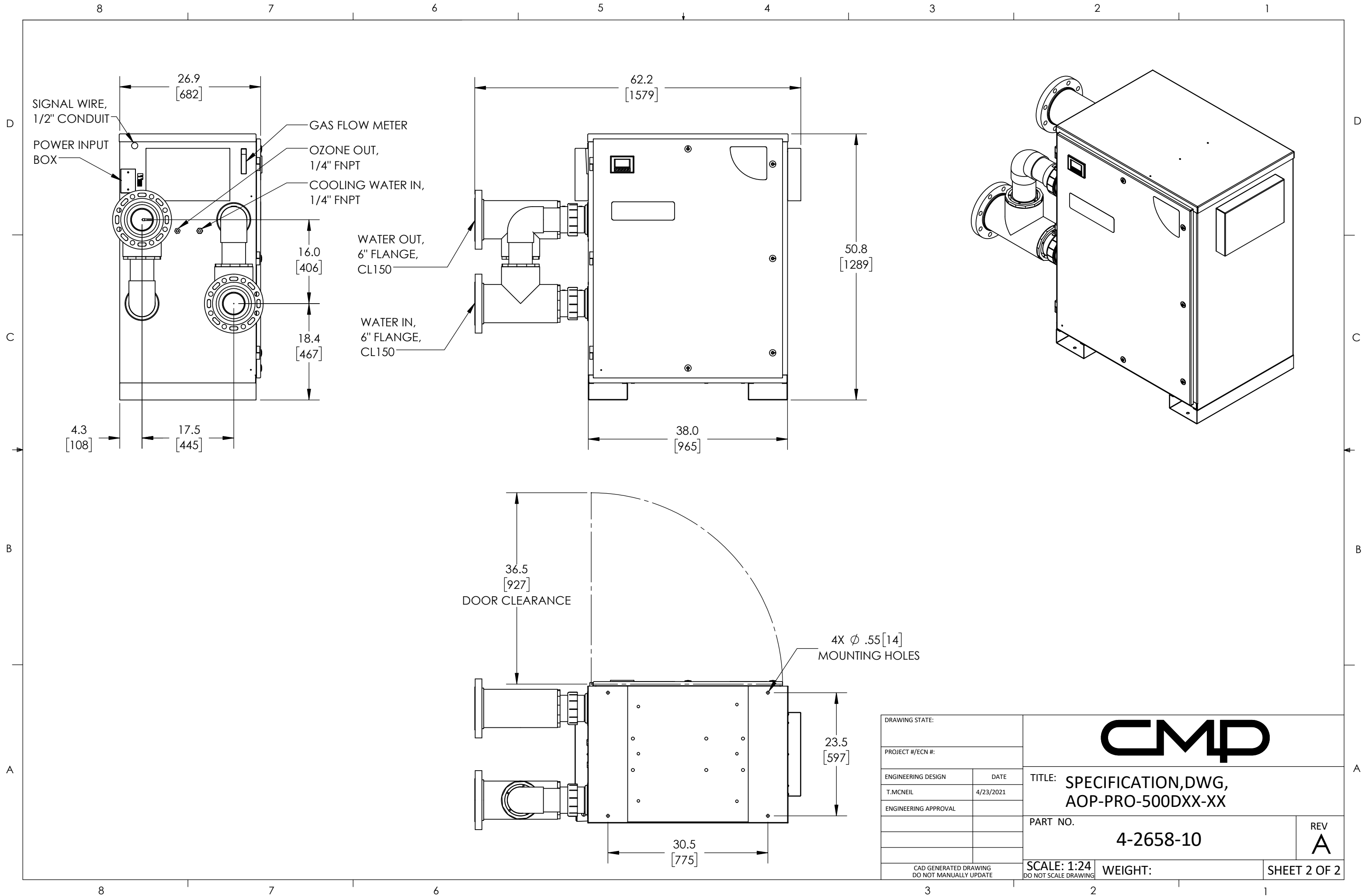
- AOP-PRO-500D-01 MODEL SHOWN.
- PVC PIPE NOT INCLUDED.

PROPRIETARY AND CONFIDENTIAL
 THE INFORMATION CONTAINED IN THIS DRAWING IS THE SOLE PROPERTY OF CUSTOM MOLDED PRODUCTS. ANY REPRODUCTION IN PART OR AS A WHOLE WITHOUT THE WRITTEN PERMISSION OF CUSTOM MOLDED PRODUCTS IS PROHIBITED.

UNLESS OTHERWISE SPECIFIED DIMENSIONS ARE IN INCHES [mm] TOLERANCES: X ± .1 XX ± .02 XXX ± .010 ANGLES: ± 1°	DRAWING STATE:	
	PROJECT #/ECN #:	
	ENGINEERING DESIGN	DATE
	T.MCNEIL	4/23/2021
MATERIAL	ENGINEERING APPROVAL	
NA		
FINISH		
NA		
	CAD GENERATED DRAWING DO NOT MANUALLY UPDATE	



TITLE: SPECIFICATION, DWG, AOP-PRO-500DXX-XX	
PART NO. 4-2658-10	REV A
SCALE: 1:24 DO NOT SCALE DRAWING	WEIGHT:
SHEET 1 OF 2	



DRAWING STATE:		CMP	
PROJECT #/ECN #:			
ENGINEERING DESIGN	DATE	TITLE: SPECIFICATION, DWG, AOP-PRO-500DXX-XX	
T.MCNEIL	4/23/2021		
ENGINEERING APPROVAL		PART NO. 4-2658-10	
		SCALE: 1:24 WEIGHT: SHEET 2 OF 2	
CAD GENERATED DRAWING DO NOT MANUALLY UPDATE		REV A	