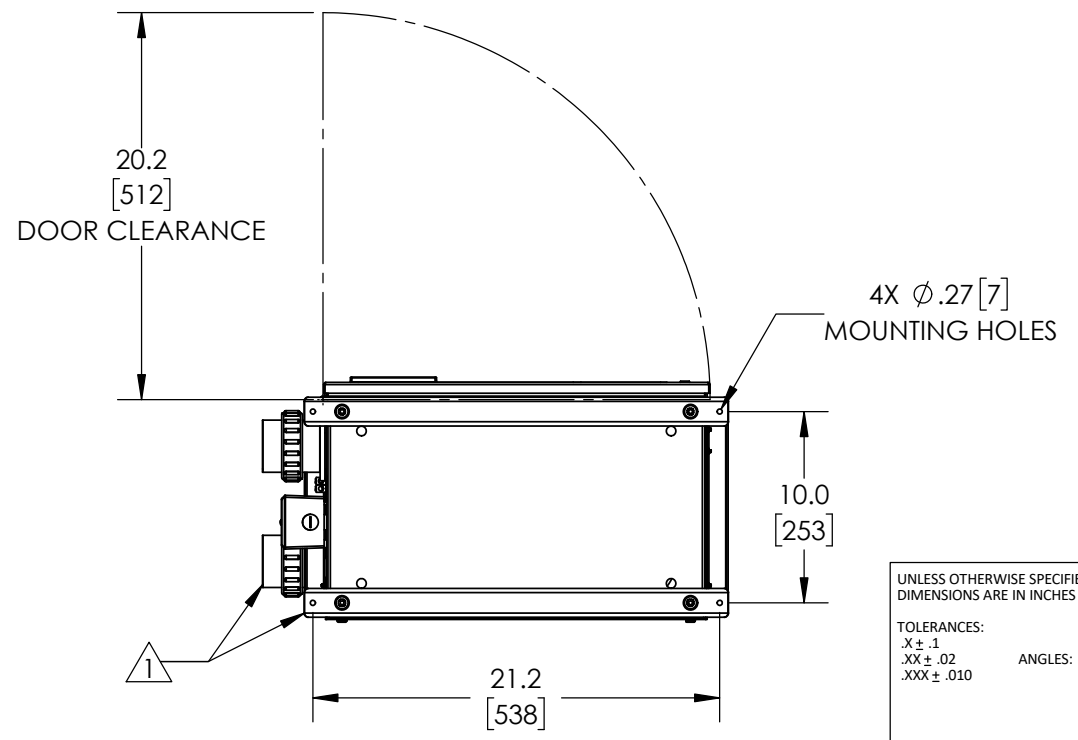
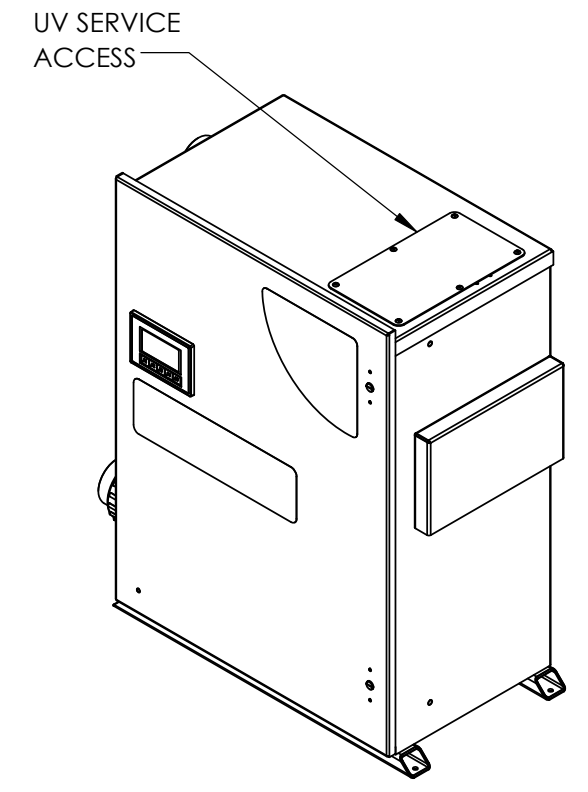
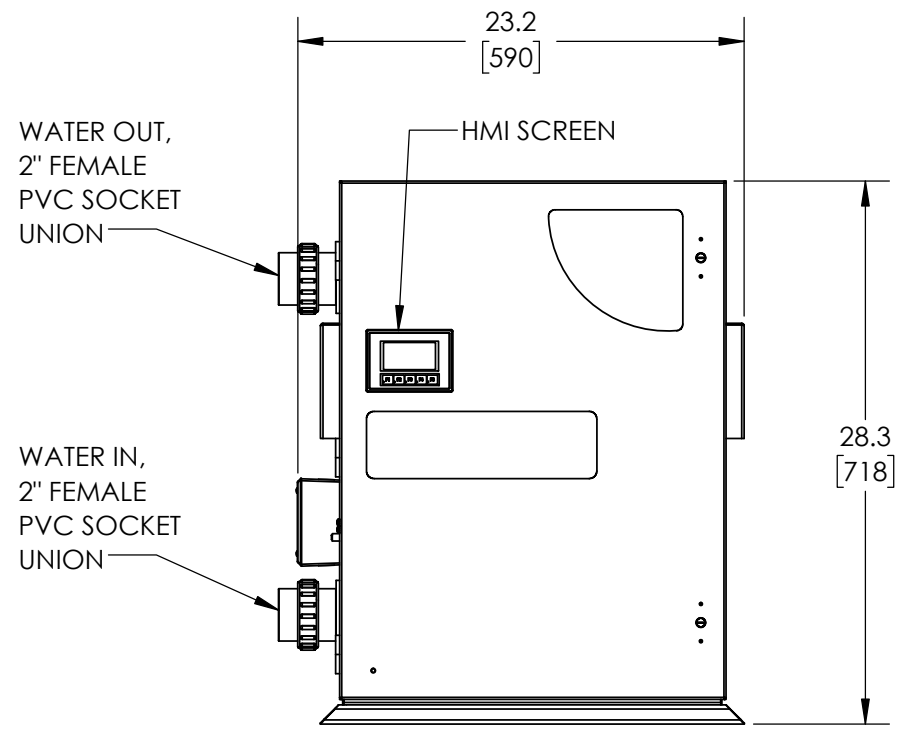
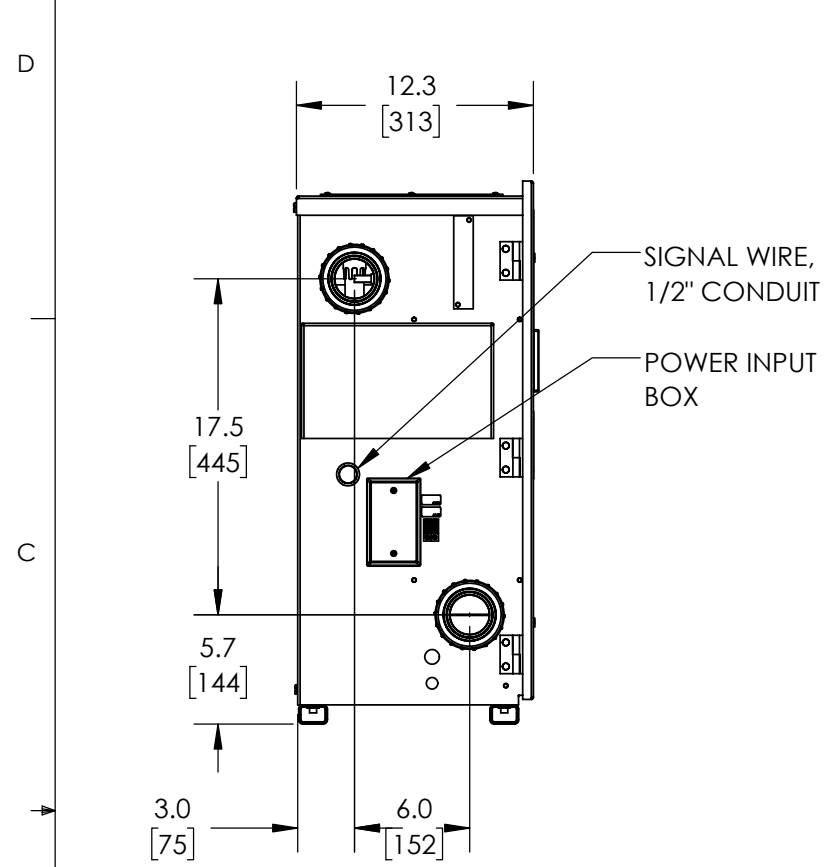


| REVISIONS |                 |         |           |
|-----------|-----------------|---------|-----------|
| REV.      | DESCRIPTION     | ECN #   | DATE      |
| A         | INITIAL RELEASE | NPI0105 | 5/26/2021 |

| SPECIFICATIONS             |                         |
|----------------------------|-------------------------|
| MODEL                      | UVC-PRO-50DXX-XX        |
| POWER                      | 120 V / 1.6 A / 60 Hz   |
| ENCLOSURE RATING           | NEMA 12                 |
| AMBIENT OPERATING TEMP.    | 40 - 110 °F (5 - 43 °C) |
| OPERATING FLOW RANGE       | 20 - 50 GPM             |
| MAXIMUM OPERATING PRESSURE | 50 PSI                  |
| MAXIMUM WATER TEMP.        | 102 °F (39 C)           |
| APPROVALS                  | UL, NSF                 |



NOTES: UNLESS OTHERWISE SPECIFIED

1 2" FEMALE PVC SOCKET UNIONS AND FLOOR/WALL MOUNTING BRACKETS INCLUDED IN PARTS KIT.

2. UVC-PRO-50D-01 MODEL SHOWN.

**PROPRIETARY AND CONFIDENTIAL**

THE INFORMATION CONTAINED IN THIS DRAWING IS THE SOLE PROPERTY OF CUSTOM MOLDED PRODUCTS. ANY REPRODUCTION IN PART OR AS A WHOLE WITHOUT THE WRITTEN PERMISSION OF CUSTOM MOLDED PRODUCTS IS PROHIBITED.

|   |                    |           |
|---|--------------------|-----------|
| UNLESS OTHERWISE SPECIFIED DIMENSIONS ARE IN INCHES [mm]<br>TOLERANCES:<br>X ± .1<br>XX ± .02<br>XXX ± .010<br>ANGLES: ± 1° | DRAWING STATE:     |           |
|   | PROJECT #/ECN #:   |           |
|   | ENGINEERING DESIGN | DATE      |
|   | T.MCNEIL           | 5/26/2021 |
| ENGINEERING APPROVAL  |                    |           |
| MATERIAL  | NA                 |           |
| FINISH  | NA                 |           |
| CAD GENERATED DRAWING<br>DO NOT MANUALLY UPDATE   |                    |           |

**CMP**

TITLE: SPECIFICATION, DWG,  
UVC-PRO-50DXX-XX

PART NO. **4-2696-02** REV **A**

SCALE: 1:10 DO NOT SCALE DRAWING WEIGHT: SHEET 1 OF 1